

ALUMINIUM COPPER BIMETAL TERMINAL LUGS

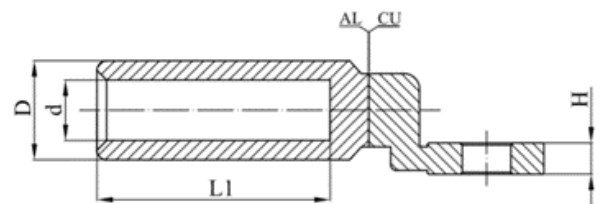
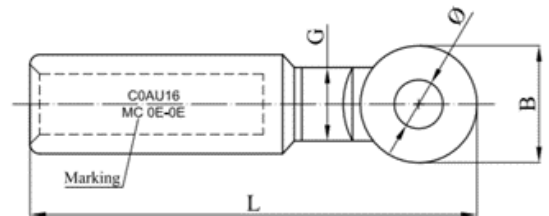
DESCRIPTION

Long aluminum copper bimetal terminal lugs are necessary for the connection of aluminum cables in low and medium voltage industrial applications or public distribution networks.

SPECIFICATIONS

Eyelet: electrolytic copper
Collar: aluminum

The aluminum collar is filled with high dropping point grease and protected by a plastic cap.



SIZE	Ø±0.3	D±0.2	d	L±2.5	L1±1.5	B	G _{0.6} ⁰	H	
C0AU16	10.5	16	5.5	80	41.5	20	12	4	
C0AU25	10.5	16	6.5	80	41.5	20	12	4	
C0AU35	12.8	16	8	86.5	41.5	24	12	5	
C1AU50	12.8	20	9	86.5	41.5	24	+2 0	14.8	5
C1AU70	12.8	20	11	86.5	41.5	24		14.8	5
C1AU95	12.8	20	12.5	86.5	41.5	24		14.8	5
C2AU120	12.8	25	13.7	111	57	30		18.8	6
C2AU150	12.8	25	15.5	111	57	30		18.8	6
C4AU185	12.8	32	17	112.5	57	30	±1	23.8	6.5
C4AU240	12.8	32	19.5	112.5	57	30		23.8	6.5
C5AU300	16.5	40	23.3	165	90.5	40	+1 -2	28	9
C5AU400	16.5	40	26	165	90.5	40		28	9