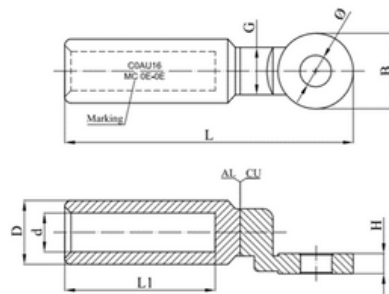


ALUMINIUM COPPER BIMETAL TERMINAL LUGS

DESCRIPTION

Long aluminum copper bimetal terminal lugs are necessary for the connection of aluminum cables in low and medium voltage industrial applications or public distribution networks.



SPECIFICATIONS

Eyelet: electrolytic copper

Collar: aluminum

The aluminum collar is filled with high dropping point grease and protected by a plastic cap.

Reference	Code	Conductor size (mm ²)	Dimensions (mm)			
			L	d	D	B
CE- COAU35	044 027	35	74,5	8	16	24
CE- C1AU50	044 028	50	74,5	9	20	24
CE- C1AU70	044 029	70	74,5	11	20	24
CE- C1AU95	044 030	95	74,5	12,5	20	24
CE- C2AU120	044 031	120	96	13,7	25	30
CE- C2AU150	044 032	150	96	15,5	25	30
CE- C4AU185	044 033	185	97,5	17	32	30
CE- C4AU240	044 034	240	97,5	19,5	32	30
CE- C5AU300	044 035	300	145	23,3	40	40
CE- C5AU400	044 036	400	145	26	40	40
CE- C6AU500	044 037	500	148	29,1	47	60 x 60
CE- C6AU630	044 038	630	148	32,5	47	60 x 60