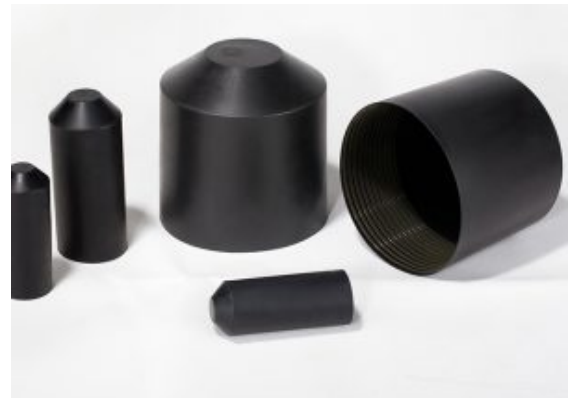


# END CAP

## DESCRIPTION

The CEET insulation end caps are electrical accessories designed to protect the ends of conductors, terminals, or unused connections. Their main function is to ensure electrical insulation, prevent short circuits, and protect against environmental conditions. The end caps are simple and effective solutions to protect electrical connections, ensuring the safety and longevity of installations.



## SPECIFICATIONS

- Ergonomic shape designed to wrap around the ends of conductors or terminals.
- Flexibility to facilitate installation on various sizes of cables or terminals.
- Electrical insulation up to high voltages, depending on the model.
- Resistance to extreme temperatures (-40°C to +120°C).
- Prevents electrical accidents by effectively insulating connections.
- Increased resistance to external aggressions such as rain, dust, or climate variations.
- Available in multiple sizes and materials to suit various applications.

Reference	Code	Initial dimension(mm)	Final dimension(mm)	Length(mm)
		Diameter(min)	Diameter(max)	
CE-CRB 10/25	067 000	25	10	45
CE-CRR 16/70	067 001	70	16	63
CE-CRC 16/27	067 002	27	16	102
CE-CRC 28/48	067 003	48	28	118
CE-CRC 46/80	067 004	80	46	130

## MATERIAL

- Rubber, silicone, or thermoplastic polymer, providing robust electrical insulation.
- Resistant to UV, moisture, and corrosion.